

# CLEEBOURG WINE PATH



Easy level



Start : Rott



..... 4,2 km

1h15

69 m

Starting from the Cave Vinicole de Cleebourg car park, on the heights of the village of the same name, the wine trail leads through fields, meadows, vineyards and the village of Cleebourg to discover Alsatian grape varieties. From the car park, walk past the Hôtel-Restaurant Le Cleebourg then turn left. Follow the 'sentier viticole' signs along the route.

*Parking at winery of Cleebourg.*

**P** *Parking Cave Vinicole de Cleebourg*

*5 Km - Wissembourg*



## USEFUL INFORMATION

Carte IGN 3814 ET



[GPX Track](#)

## CONTACT

Office de Tourisme de l'Alsace Verte  
03 88 80 89 70 - [tourisme@alsace-verte.com](mailto:tourisme@alsace-verte.com)



## STEPS

### 1 Cleebourg wine cellar car park



From the bus stop on route 317, walk past the restaurant 'Le Cleebourg', then turn left and follow the signs for the 'sentier viticole'.

### 2 Vineyard

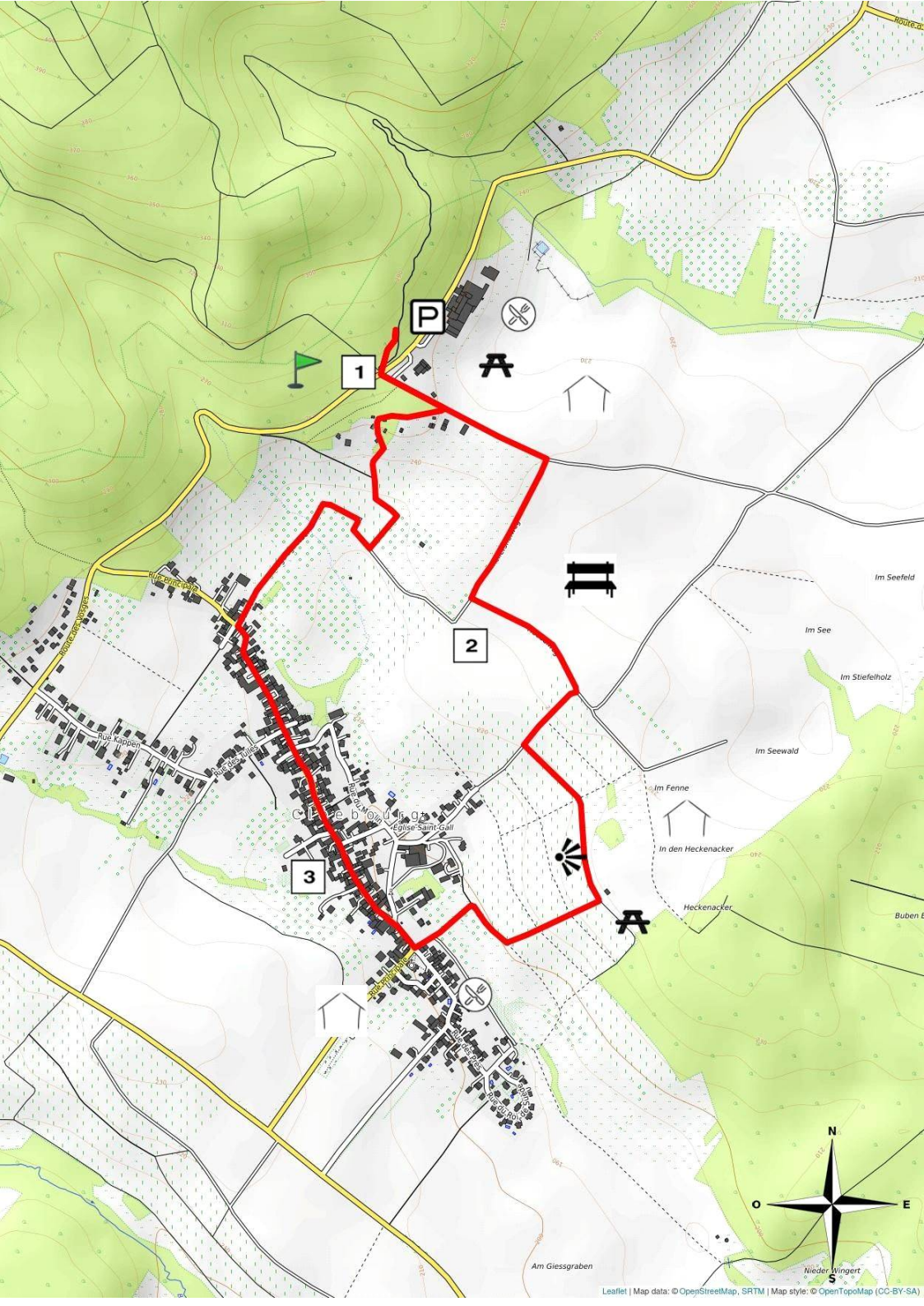


Drive through the vineyards. Beautiful view of Cleebourg below. When you reach the shelter, head down towards the village.

### 3 Village of Cleebourg



Arriving in Cleebourg, turn right into the main street. Turn right into rue Wolf and follow the road and then the forest path back to the car park.



1

P

A

2

3

N

O

E

Nieder Würgert