

 9,89km

 2h

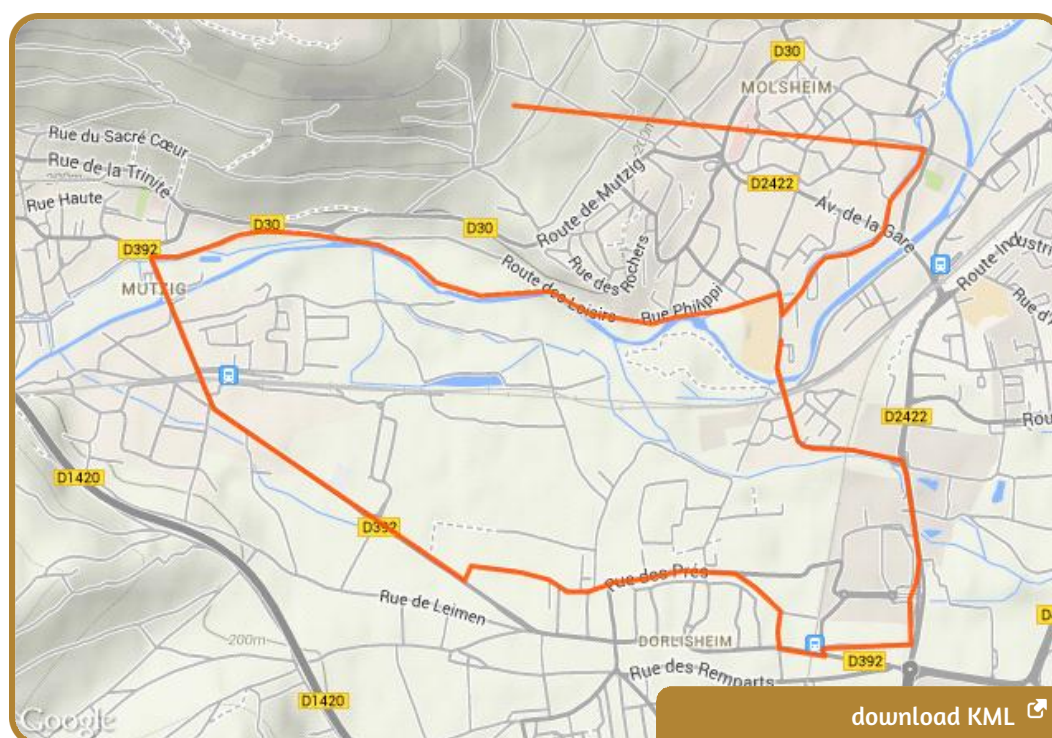
 73m

 Suitable for everyone 

CYCLING TOUR FROM HISTORY TO HERITAGE



cycle track



Discover the medieval cities of Molsheim and Mutzig. A little stroll in the town center of Mutzig will give you the opportunity to take a look at the old fortifications and to walk among ancient medieval houses. Overlooking the town and hiding below the tree line, lays the Fort of Mutzig. In the village of Dorlisheim you can follow in the footsteps of a genius inventor, Ettore Bugatti, who now rests in the Bugatti family crypt of the town's cemetery. At the entrance of town, the Bugatti factories still stand proud next to St. Jean Castle. Other sites, such as the Jesuit Church and the Chartreuse, are also must-sees in Molsheim.

departure

Tourist Office

GPS departure

48,5409564288966 / 7,49836369323725

Altitude departure

218 m

nearest railway station

5 km - Molsheim

IGN Map

3716 ET / Mont-Sainte-Odile/Molsheim

restaurants on the path

Yes