

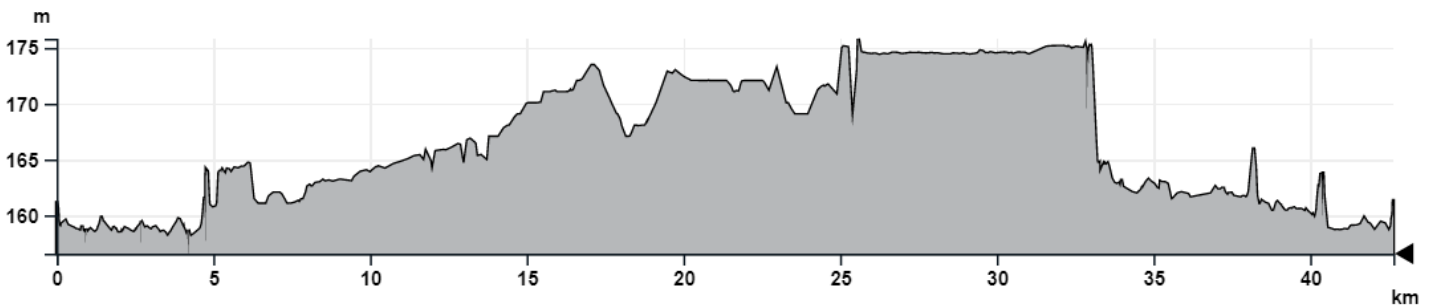
BL976 - Rhineland Jungle

LOCAL CIRCULAR CYCLE TRAILS -50 KM

42,6km ▲106m

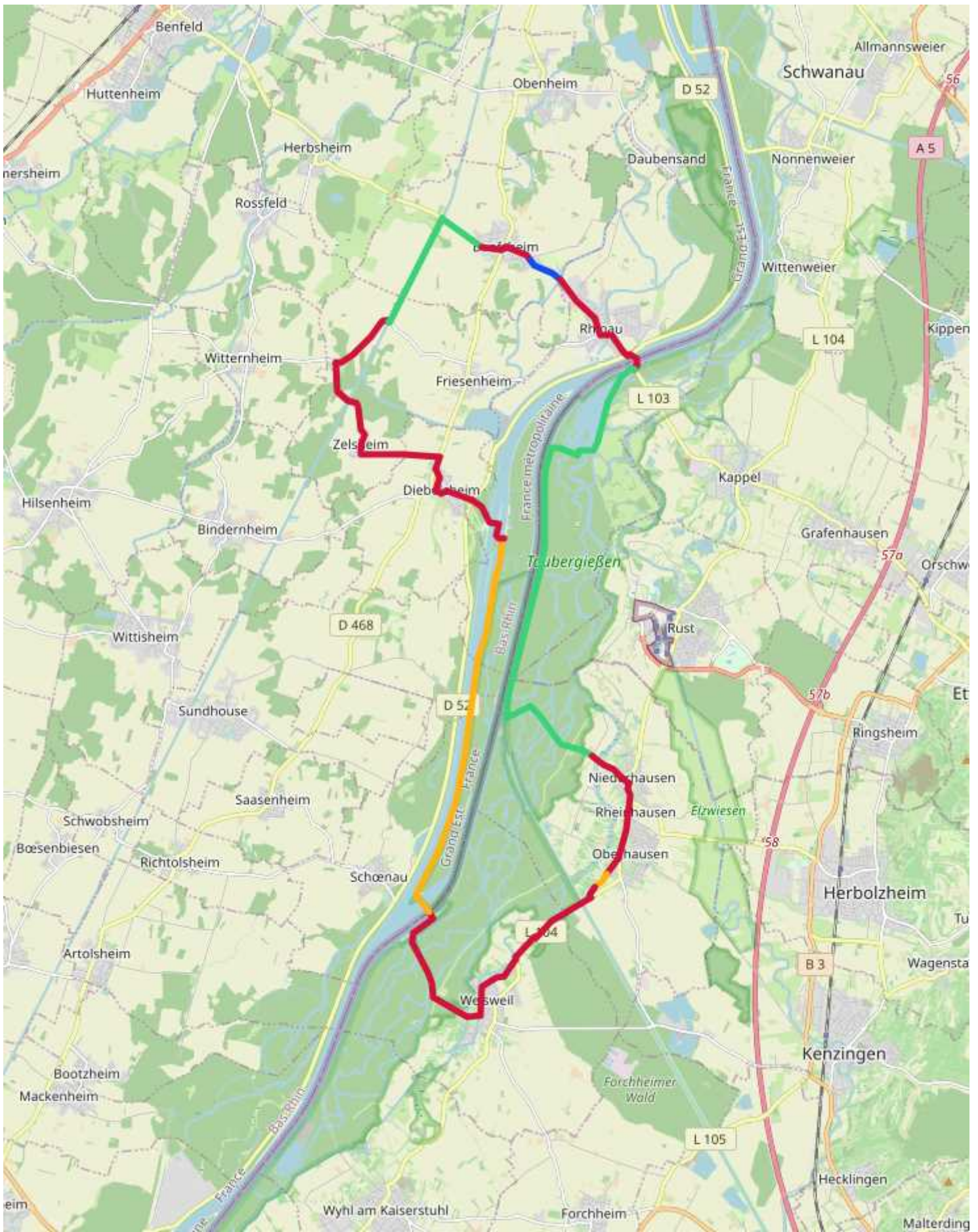


Copyright : 100kmautour.com



🚲 THE ROUTE

This land with its vast natural heritage and preserved habitats will delight anyone who strays off the beaten track. "Ried" means reed and the name is used by extension to describe the meadows in the floodplain of Alsace and the forests with their abundant flora. You will discover the nature reserves, "Giessen" (groundwater springs), "Brunnwasser" (groundwater rivers) and the flower-decked villages taking you to the heart of the Ried's heritage. We also suggest that you pop over to the other bank of the Rhine by ferryboat for a fun, action-packed day out at Europa Park - one of the largest theme parks in Europe.



■ Road
 ■ Restricted access road
 ■ Separate cycle track
 ■ Cycle lanes



WHERE TO STAY?

HOTEL

- **Hotel-restaurant 'Aux bords du Rhin'**
rue du Rhin
67860 Rhinau
03 88 74 60 36
www.aux-bords-du-rhin-rhinau.fr

BED AND BREAKFAST

- **Bed and breakfast Henriette ISSLER**
route de Colmar
67860 Boofzheim
03 88 58 76 99
- **Bed and breakfast Pierrette KIENY - Ambiance-jardin**
rue Abbé Wendling
67230 Diebolsheim
03 88 74 84 85
www.ambiance-jardin.com

VACATION RENTALS

- **Meublé de tourisme Résidence les Charmes - Aulne** 
rue de Colmar
67860 Boofzheim
06 72 67 53 14
www.residencelescharmes.fr

- **Meublé de tourisme Résidence les Charmes - Frêne** 
rue de Colmar
67860 Boofzheim
06 72 67 53 14
www.residencelescharmes.fr

- **Meublé de tourisme Le Coeur d'Alsace**
rue Weiss
67860 Boofzheim
07 86 10 98 82
gitelecoeurdalsace.business.site

- **Furnished accomodation Le clos de la Tabatière - La Grange de Delphine**
rue d'Enghien
67860 Rhinau
07 68 37 44 78

- **Furnished accomodation Au Fil des Saisons - Printemps**
rue Jean de Beaumont
67230 Diebolsheim
06 77 89 49 00
gitesaufildessaisons.com

CAMPSITE

- **Campsite Le Ried - Tohapi**
rue du Camping
67860 Boofzheim
0825 00 20 30
www.tohapi.fr/alsace/camping-le-ried.php

- **Campsite la ferme des tuileries**
rue des Tuileries
67860 Rhinau
03 88 74 60 45
www.fermedestuileries.com

PARKING AREA FOR CAMPERS-DORMOBILES

- **Service point for campers-dormobiles**
rue du Camping
67860 Boofzheim
08 25 00 20 30
www.tohapi.fr

- **SAS Campsite la Ferme des Tuileries - service point for campers-dormobiles**
rue des Tuileries
67860 Rhinau
03 88 74 60 45
www.fermedestuileries.com

DISCOVER THE FLAVORS OF ALSACE

RESTAURANTS

- **Auberge de la Treille**
route de Rhinau
67860 Boofzheim
03 88 74 60 44
- **L'Adriatique**
place de la Mairie
67860 Boofzheim
03 88 58 77 88
www.ladriatiquepizza.fr

- **Buerehof**
route de Strasbourg
67860 Boofzheim
09 81 21 62 98
- **Restaurant Au Vieux Couvent**
rue des chanoines
67860 Rhinau
03 88 74 61 15
www.vieuxcouvent.fr
- **Restaurant Aux bords du Rhin**
rue du Rhin
67860 Rhinau
03 88 74 60 36
www.aux-bords-du-rhin-rhinau.fr/tourisme-en-alsace

- **Ristorante Pizzeria Chez Nino**
rue de la Caserne
67860 Rhinau
03 90 57 23 88
- **Restaurant A La Couronne**
rue Jean de Beaumont
67230 Diebolsheim
03 88 74 81 07
- **Restaurant Aux Deux Clefs**
rue principale
67860 Friesenheim Neunkirch
03 88 74 80 87

E-BIKE AND BICYCLE HIRE

■ Bike renting

rue du Rhin
67860 Rhinau
03 88 74 68 96
www.grandried.alsace

■ Reifen und Zweirad Schönstein

Elzwiesen 2
79365 Rheinhausen
0049 76 43 69 06
<https://www.schoensteinreifen.de/index.php>

■ Tourist office of the Grand Ried - Rhinau

rue du Rhin
67860 Rhinau
03 88 74 68 96
www.grandried.alsace

■ RV Cyclo Motoculture

rue de la Dordogne
67860 Rhinau
03 69 33 45 03

■ DBS Automobile

rue Principale
67230 Diebolsheim
06 11 87 10 82

BICYCLE REPAIRS

■ Reifen und Zweirad Schönstein

Elzwiesen 2
79365 Rheinhausen
0049 76 43 69 06
<https://www.schoensteinreifen.de/index.php>

USEFUL INFO

PICNIC AREA

■ Picnic area

D 5
67860 Boofzheim

■ Picnic place

ZA du Kehle
67860 Rhinau

■ Picnic place

D 20
67860 Friesenheim

■ Picnic place

route de Zelsheim
67230 Diebolsheim

VISITS?

♥ Europa-Park

Europa-Park-Straße
77977 Rust
+49 1805 776688
www.europapark.de
Whether as a family or with friends, come for an unforgettable experience and unwind far from the hustle and bustle of everyday life. The world's largest theme park is waiting for you.

♥ The popular Art House Alsace Patrick Singer

rue de Strasbourg
67860 Boofzheim
06 68 57 47 47
You will discover many objects in reference to the historical trades used in Alsace.

♥ Ferry boat over the Rhine

rue du Rhin
67860 Rhinau
03 88 74 68 96
www.inforoute67.fr
The ferry is an original experience to cross the Rhine. In a few minutes you are in Germany.

♥ Educational farm - AGF - CINAÉ

rue Sergent Viala
67860 Rhinau
03 88 74 66 44
fermeeducativerhinau.wix.com/fermeeducativerhinau
educ-de-rhinau
The farm aims to educate people to respect the environment and to raise awareness of the interdependence of man, animal and nature.

♥ EDF - Hydroelectric power station Rhinau

D20
67860 Rhinau
03 88 74 80 07
A panoramic footbridge on the left side of the power station offers a view of the engine room. Locks with two chambers and a dam complete the layout.

♥ Ranking

Chemin Départemental 20
67860 Rhinau
03 88 74 81 79
www.aufildurhin.com
Take a look at the boat lock, but also at the operation of the plant. With free access, a view of the engine room from a footbridge where there is a permanent exhibition.

♥ Taubergiessen Nature Reserve

rue du Rhin
67860 Rhinau
03 88 74 68 96
www.grandried.alsace
Rare plants, water springs and virgin forest: the nature reserve is a refuge for many species of wintering birds.

♥ Ile de Rhinau Nature Reserve

67860 Rhinau
03 89 83 34 10
www.conservatoire-sites-alsaciens.eu
Discover this nature reserve, a real Alsatian jungle, that shelters different biotopes and an exceptionally large number of rare animal and plant species.

♥ **Funny World**

Allmendstrasse
77966 Kappel-Grafenhausen
+49 7822 445990
www.funny-world.fr
Come and discover this theme park with a Mexican style, specially designed for kids ages 2 to 10, with rides and plenty of games.

♥ **Flowered cave**

rue de Zelsheim
67230 Diebolsheim
03 88 74 81 90
Looking for a moment of calm and meditation, in a beautiful space with trees and flowers?

♥ **Notre Dame of Neunkirch - Places of pilgrimage**

rue principale
67860 Friesenheim Neunkirch
03 88 74 86 36
This site is a haven of silence, peace and renewal in an isolated setting, far from any major roads.

♥ **Nautical halt - The Boat**

rue du Canal
67860 Boofzheim
03 87 03 61 74
www.leboat.fr/croisiere-fluviale/france/alsace/boofzheim
Partez en toute liberté et décidez au jour le jour des étapes de votre croisière...

♥ **Rulantica**

Roland Mack Ring 1
77977 Rust
www.europapark.de/fr/rulantica/rulantica-le-nouvel-univers-aquatique-indoor
Rulantica promises pure aquatic fun for everyone, whether you are an adrenaline junkie, a toddler, or someone who prefers to take it easy in the new aquatic world.

♥ **Yullbe - virtual reality experience**

77977 Rust
7822775666
www.europapark.de/fr/yullbe

 **TOURIST OFFICE**

■ **Tourist office of the Grand**

Ried - Rhinau 

rue du Rhin
67860 Rhinau
03 88 74 68 96
www.grandried.alsace