

# CYCLING CIRCUIT C17: HISTO'VÉLO



Sportive level



Start : Schirmeck



12 km



1h30 min



515 m

## Pedalling for history!

Leave the car behind, get on your bike and visit 2 major memorial sites: the CERD, the Memorial of Alsace Moselle, and the Struthof concentration camp. Take a break for lunch!



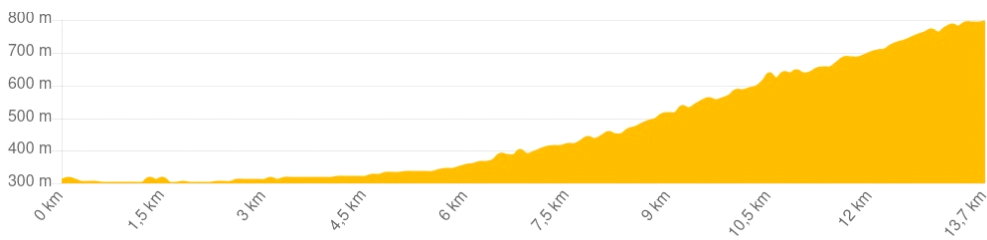
Bruche Valley Tourist Information Office



Parking at Place du Marché - Schirmeck



0,5 Km - Schirmeck



## USEFUL INFORMATION

N'oubliez pas d'emporter une carte !  
IGN N° de la carte : 1/25 000 Bruche 25  
N° carte Club Vosgien : Secteur carte : 1/25 000  
3716 ET



[GPX Track](#)

## CONTACT

Office de tourisme de la vallée de la Bruche  
03 88 47 18 51 - rando-bruche.fr




All trail markings are reproduced courtesy of the Club Vosgien © Fédération du Club Vosgien - 2021



## STEPS

### 1 Stage 1: Bergopre Park



From the Tourist Office cross Grand'Rue and turn right onto Rue de la Gare for 100 m. Then turn right after passing the River Bruche (bridge), following the signs to "Parc Municipal" (Bergopre Park). Pass the buildings on the left, following the cycle path markings . Continue past the buildings until you get to a wooden footbridge overlooking Grand'Rue.

### 2 Stage 2: The Alsace Moselle Memorial




Turn left at the bridge (D 392) then right onto Route de Strasbourg (D 392). Continue straight ahead for 650 m and then turn left, passing under the railway line towards "Mémorial Alsace Moselle".

*①Visit to the Alsace Moselle Memorial, about 2 hours. (tel. 03 88 47 45 50).*

### 3 Stage 3: Schirmeck-La Broque station



Retrace your steps to Bergopre Park. Follow the markings on the cycle path . In the park, turn right after the lake and take Rue de la Gare. Continue on this road to the left, passing in front of the station (on your left). *①In Schirmeck. Restaurant: **Taverne de la Perle** (03 88 19 92 20 131 - Grand Rue). Snacks: **Coffityvallee** (03 88 33 44 90 - 165 Grand'Rue).*

### 4 Stage 4: Leaving Schirmeck, towards La Broque



100 m after the station, turn left (Rue de la Gare).

*①Restaurant: **Le Sabayon** (03 88 50 58 35 - 4 Rue de la Gare, La Broque).*

Continue for 150 m to the intersection with the D 392 / D 2420. Continue straight ahead in La Broque towards "Rothau".

## 5 Stage 5: Through La Broque



After 550 m, slight right towards La Claquette. Continue straight ahead for 1.5 km until you get to the roundabout opposite La Claquette school. At the roundabout opposite the school, slight left onto Rue du Général Leclerc (D 261). 🍷Restaurants: *La Schlitte* (03 3 88 97 06 07 - 26 Route de Fréconrupt, La Broque), *Pizzeria Le Castello* (03 88 97 01 02 - 87 Rue de l'Église, Schirmeck).

## 6 Stage 6: Through La Claquette to Rothau



After 280 m on Rue du Général Leclerc, turn left into Rue de la Gare, go past the railway line and continue as far as the roundabout (intersection with the D 1420). 🍷Restaurants in Rothau: *Les Petits Plats de "Mamama"* (03 3 88 47 15 28 - 6 Place du Général de Gaulle), *Rest. de la Place* (09 81 91 89 20, 8 Place du Général de Gaulle). Snacks: *Banette Fieng bakery* (03 88 47 12 75 - 3 Route de Schirmeck)

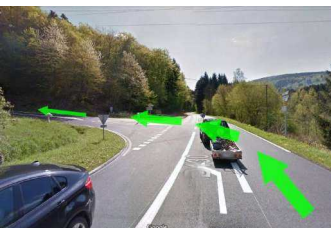
## 7 Stage 7: Up towards the Struthof



At the roundabout go straight ahead towards "Le Struthof" on the D 130. Continue for 2.5 km (you go past the cinema "Le Royal" on the left and then leave the village).

🍷Restaurants in Natzwiller: *Charapont farmhouse restaurant* (03 3 88 97 98 46 - 5 Route de Rothau, Natzwiller), *Auberge Metzger* (03 3 88 97 02 42 - 55 Rue Principale, Natzwiller).

## 8 Stage 8: Natzweiler-Struthof concentration camp



At the intersection, turn left at the hairpin bend towards "Le Struthof" D 130. After a steep climb of 5.5 km, you will arrive at the Natweiler-Struthof concentration camp and the European Centre for Deported Resistant Fighters (museum). 📍Visit to the Struthof site, about 2 hours (tel. 03 88 47 44 57).

Go back the same way as on the way out, directly to the Tourist Office.

